



Product Data Sheet

DC408

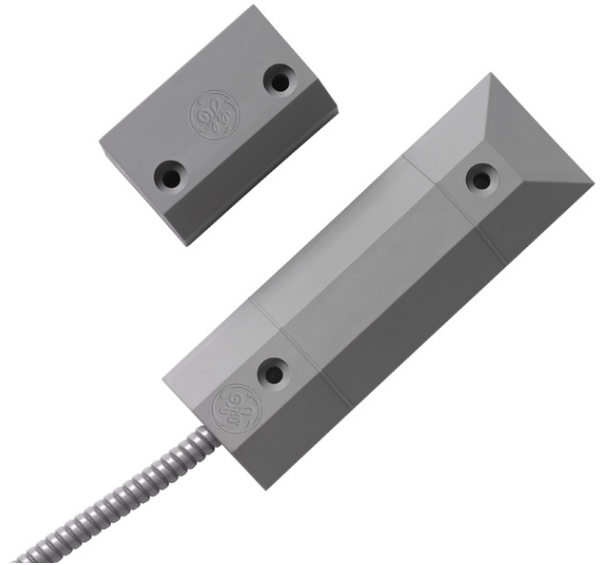
Industrial floor mount contact for garage door, high security grade 3, grey

Requirements for grade 3 magnetic contacts

The grade 3 magnetic contacts are high security contacts which do meet the following requirements: preciseness of opening distance, magnet polarisation, strength of the magnet

Model with built in EOL resistors available

Though built in EOL resistors are not mandatory according to EN50131-2.6 requirements, GE offers a model with built in EOL resistors for a quick installation (see how to Order information)



Standard Features

- EN 50131-2-6 Grade 3 and VDS certified
- 2m cable
- Tamper protected

DC408

Industrial floor mount contact for garage door, high security grade 3, grey

Specifications

Contact type	1 - pin NC contact
Switching distance	34 mm, +/- 5 mm
Switching voltage	max. 100 V DC
Switching current	max. 500 mA
Contact rating	max. 6 W or 6 VA
Contact resistance	max. 0.15 Ohm
Breakdown voltage	> 250 V
Permissible operating voltage	max. 40 V
Connection cable	LIYY 4 x 0.14 mm Cu tin-plated; Suitable for LSA IDC method of termination
External cable color	White
Internal conductor	Blue
Contact dimensions	144 x 50 x 16.5 mm
Cable dimensions	Ø 3.2 mm x 2 m
Metal Tube	L 1 m, Ø 6 x 9 mm steel galvanized, encased in PVC (up to 10 m length VdS-approved)
Magnet	Ø 12 x 55 mm AlNiCo, axially polarized
Magnetic housing dimensions	66 x 40 x 35 mm
Housing material	Polyamide GF
Color	Grey
Temperature range	- 25 °C to + 70 °C
Protection category	VdS - environmental class III, IP 67
Certifications	EN 50131-2-6 Grade 3, VdS class C, SBSC (pending)

Ordering Information

Part No.	Description
DC408	Industrial floor mount contact for garage door, high security grade 3, grey
DC408R4.7	Industrial floor mount contact for garage door, high security grade 3, with 4k7 EOL resistor, grey

