

# AARDINGS- EN EQUIPOT. LITZE, VERTIND KOPER, 30 MM<sup>2</sup>, 300 MM, GAT 10,5 MM

## CATALOG NUMBER

**MBJ30-300-10**



MBJ Grounding and Bonding Braids are a reliable and convenient grounding solution for applications that require flexibility and durability. The tinned copper ground braids with massivated palms come ready to install without any additional cutting, stripping, crimping or punching and do not require the addition of tin or crimped lugs. The proprietary manufacturing process optimizes the electrical contact between each wire and helps eliminate moisture issues in the palms, preventing corrosion and lengthening the useful life of the braid.

## CERTIFICATIONS



## FEATURES

Complete range of earth/ground flexible connections from 6 - 100 mm<sup>2</sup> (11.84 - 197.35 kcmil) cross section and from 100 - 500 mm (3.937" - 19.685") length

Integral palm, without tin or crimped lugs for superior electrical contact and tensile strength resistance

Resistant to vibration and fatigue, reducing maintenance

Provides weight savings, material savings and lower impedance when compared to similar lugged cables with insulation

Ready to use out of the box, eliminates the need for cutting, stripping, crimping and punching

Quick and easy to install

Recommended by the EMC/EMI directives and less impedance than cables

EAC compliant

RoHS compliant

Compliant to ISO 6469-1 (Electrically propelled road vehicles - Part 1: Rechargeable energy storage system) - Section 6.2.2 Vibrations

## PRODUCT ATTRIBUTES

Article Number: 556760

Material: Koper

Finish: Vertind

Working Temperature: 105 °C Max

Certification Details: UL® 467

Complies With: IEC® 60439.1; IEC® 61439.1

Ampacity: 180 A

Thickness: 2 mm

Cross Section: 30 mm<sup>2</sup>

Length: 300 mm

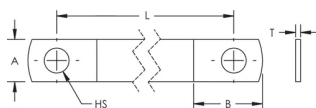
Hole Size: 10.50 mm

A: 22 mm

B: 28 mm

Unit Weight: 0.092 kg

## DIAGRAMS



## WARNING

nVent products shall be installed and used only as indicated in nVent's product instruction sheets and training materials. Instruction sheets are available at [www.nvent.com](http://www.nvent.com) and from your nVent customer service representative. Improper installation, misuse, misapplication or other failure to completely follow nVent's instructions and warnings may cause product malfunction, property damage, serious bodily injury and death and/or void your warranty.

### Noord-Amerika

+1.800.753.9221

Option 1 – Customer Care

Option 2 – Technical Support

### Europa

Netherlands:

+31 800-0200135

France:

+33 800 901 793

### Europa

Germany:

800 1890272

Other Countries:

+31 13 5835404

### APAC

Shanghai:

+ 86 21 2412 1618/19

Sydney:

+61 2 9751 8500



Our powerful portfolio of brands:  
**nVent.com CADDY ERICO HOFFMAN RAYCHEM SCHROFF**  
**TRACER**