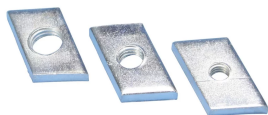


ECN MOER VOOR C-PROFIEL E0/E0L/E1, M6 AANSL.

CATALOG NUMBER

E01CNM6



FEATURES

Glijmoer voor C-profielen

PRODUCT ATTRIBUTES

Article Number: 315370

Material: Staal

Finish: Elektrolytisch gegalvaniseerd

Channel Type: E0;E0L;E1

Rod Size: M6

Thickness: 4 mm

A: 23 mm

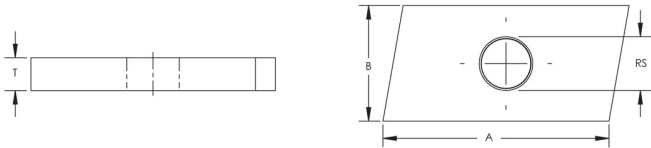
B: 14 mm

ADDITIONAL PRODUCT DETAILS

Sliding force F2 is limited to 600 N for all types of Nuts and T-Bolts for C-channel System.

Nuts and T-Bolts for C-channel System	
C-Channel Type	Pullout Force F1
E0	1000 N
E0L	1000 N
E1	1600 N

DIAGRAMS



WARNING

nVent products shall be installed and used only as indicated in nVent's product instruction sheets and training materials. Instruction sheets are available at www.nvent.com and from your nVent customer service representative. Improper installation, misuse, misapplication or other failure to completely follow nVent's instructions and warnings may cause product malfunction, property damage, serious bodily injury and death and/or void your warranty.

Noord-Amerika +1.800.753.9221 Option 1 – Customer Care Option 2 – Technical Support	Europa Netherlands: +31 800-0200135 France: +33 800 901 793	Europa Germany: 800 1890272 Other Countries: +31 13 5835404	APAC Shanghai: + 86 21 2412 1618/19 Sydney: +61 2 9751 8500
---	--	--	--