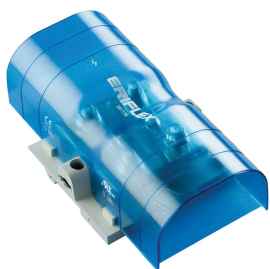


AANSLUITKLEM, KABELSCHOEN-NAAR-KABELSCHOEN, 800 A

CATALOG NUMBER

SBLL-800



CERTIFICATIONS



FEATURES

Tinned copper block allows for copper or aluminum conductor connections

Accessible studs allow for easy connection of sections of nVent ERIFLEX Flexibar or other conductors

Design allows for visual inspection of conductor and confirmation of connection

Adjustable transparent cover

Modulaire blokken met klikbevestiging voor het bouwen van meerpolige voedingsblokken

Easily clips onto DIN rail or mounts to panel with screws

SBLEC Power Terminals Fixing Accessory required for direct panel mount

RoHS compliant

Halogeenvrij

PRODUCT ATTRIBUTES

Article Number: 561136

Material: Copper;Thermoplastic

Finish: Vertind

Max Current Rating, IEC: 1,250 A

Max Current Rating, UL/CSA: 800 A

Short Term Withstand Current (Icw) 1s: 57.6 kA

Peak Short Circuit Current (Ipk): 75 kA

Short Circuit Current Rating (SCCR): 100 kA

Max Working Voltage, IEC (Ui): 1,000 VAC;1,500 VDC

Max Working Voltage, UL (Vin): 1,000 V

Number of Stud Connections: 4

Stud Connection Conductor Width: (2) 20 – 40 mm;(1) 50 – 80 mm

Stud Connection Compact Stranded Wire Size: (2) 25 – 300 mm²

Stud Connection Wire Size: (2) #4 - 500 kcmil

Depth: 75 mm

Height: 205.70 mm

Width: 115 mm

A: 108 mm

Unit Weight: 0.700 kg

Certification Details: UL® 1059

Flammability Rating: UL® 94V-1

Complies With: IEC® 60947-7-1

ADDITIONAL PRODUCT DETAILS

Power terminal connections are interchangeable and can be used as line side or load side connections.

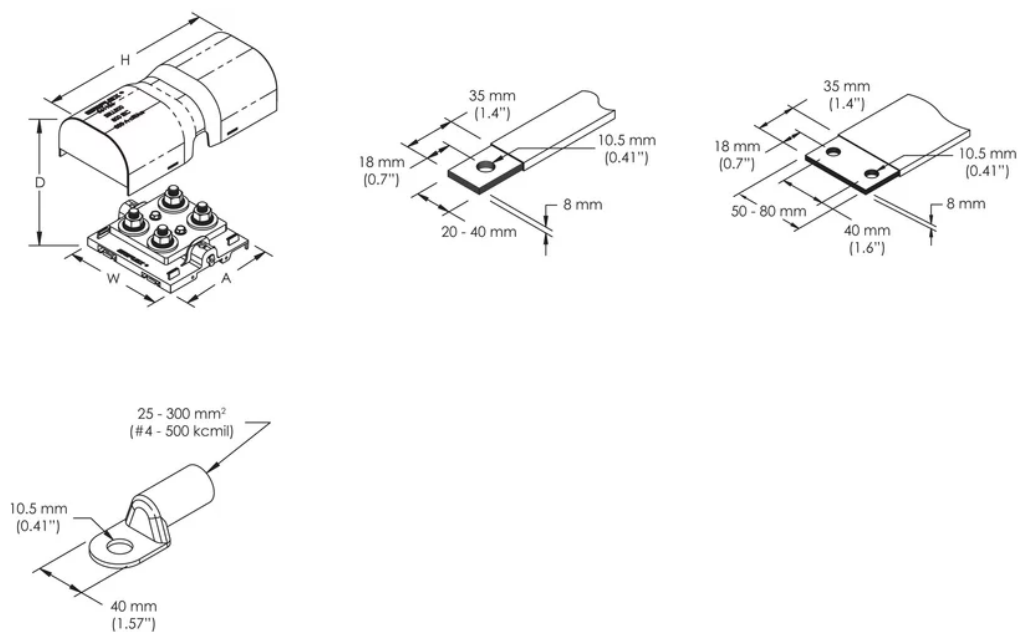
Design Guideline for Distribution Blocks, Power Blocks and Power Terminals

Derating according to Ambient* Temperature (°C) to maintain working temperature of 85°C

Ambient Temperature (°C)	30°	35°	40°	45°	50°	55°	60°	65°	70°	75°
Derating Coefficient (d)	1	1	1	0.94	0.88	0.82	0.75	0.67	0.58	0.47

*environment around the terminal blocks inside the enclosure

DIAGRAMS



WARNING

nVent products shall be installed and used only as indicated in nVent's product instruction sheets and training materials. Instruction sheets are available at www.nvent.com and from your nVent customer service representative. Improper installation, misuse, misapplication or other failure to completely follow nVent's instructions and warnings may cause product malfunction, property damage, serious bodily injury and death and/or void your warranty.

Noord-Amerika

+1.800.753.9221

Option 1 – Customer Care

Option 2 – Technical Support

Europa

Netherlands:

+31 800-0200135

France:

+33 800 901 793

Europa

Germany:

800 1890272

Other Countries:

+31 13 5835404

APAC

Shanghai:

+ 86 21 2412 1618/19

Sydney:

+61 2 9751 8500



Our powerful portfolio of brands:
nVent.com CADDY ERICO HOFFMAN RAYCHEM SCHROFF
TRACER