

# ECN MOER VOOR C-PROFIEL E4, M10 AANSL.

## CATALOG NUMBER

**E4CNM10**



## FEATURES

Glijmoer voor C-profielen

## PRODUCT ATTRIBUTES

Article Number: 315360

Material: Staal

Finish: Elektrolytisch gegalvaniseerd

Channel Type: E4

Rod Size: M10

Thickness: 6 mm

A: 30 mm

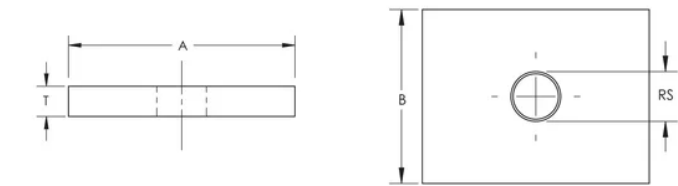
B: 23 mm

## ADDITIONAL PRODUCT DETAILS

Sliding force F2 is limited to 600 N for all types of Nuts and T-Bolts for C-channel System.

| Nuts and T-Bolts for C-channel System |                  |
|---------------------------------------|------------------|
| C-Channel Type                        | Pullout Force F1 |
| E4                                    | 2600 N           |

DIAGRAMS



WARNING

nVent products shall be installed and used only as indicated in nVent's product instruction sheets and training materials. Instruction sheets are available at [www.nvent.com](http://www.nvent.com) and from your nVent customer service representative. Improper installation, misuse, misapplication or other failure to completely follow nVent's instructions and warnings may cause product malfunction, property damage, serious bodily injury and death and/or void your warranty.

**Noord-Amerika**  
+1.800.753.9221  
Option 1 – Customer Care  
Option 2 – Technical Support

**Europa**  
Netherlands:  
+31 800-0200135  
France:  
+33 800 901 793

**Europa**  
Germany:  
800 1890272  
Other Countries:  
+31 13 5835404

**APAC**  
Shanghai:  
+ 86 21 2412 1618/19  
Sydney:  
+61 2 9751 8500