

EM powerLED BASIC 1 – 2 W

Combined emergency lighting LED driver 1 – 4 W

**Product description**

- _ Emergency lighting LED driver for manual testing
- _ For self-contained emergency lighting
- _ SELV for output voltage < 60 V DC
- _ Low profile casing (21 x 30 mm cross-section)
- _ 5 years guarantee

Properties

- _ Mains and emergency operation
- _ Constant current mode
- _ With either screw or clip fastening (clip-fix)
- _ 1, 2 or 3 h rated duration
- _ Selectable operating time (jumper)
- _ Green charge status display LED
- _ Output power limitation
- _ Automatic restart after LED replacement
- _ Electronic multi-level charge system
- _ SELV classified (outputs powerLED, battery, status LED, test switch)
- _ Polarity reversal protection for battery
- _ Deep discharge protection
- _ Very low energy consumption from the battery after activation of the deep discharge protection
- _ Short-circuit-proof battery connection
- _ Emergency lighting LEDs available

Batteries

- _ High-temperature cells 2 Ah
- _ NiMH batteries
- _ Cs cells
- _ 4 year design life
- _ 1 year guarantee
- _ For battery compatibility refer to data sheet

Website

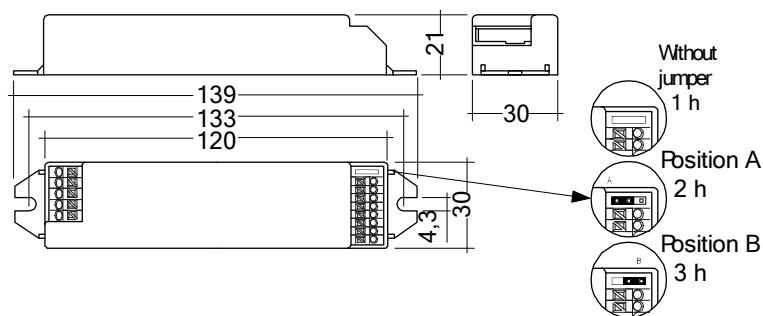
<http://www.tridonic.com/89899858>



EM powerLED BASIC 1 – 2 W

Combined emergency lighting LED driver 1 – 4 W

The complete data sheet for this product is available in the Downloads section.

**Ordering data**

| Type ^② | Article number | Dimensions L x W x H | Max. number of LEDs | Packaging, carton | Packaging, pallet | Weight per pc. |
|--|-----------------|----------------------|---------------------|-------------------|-------------------|----------------|
| Screw fastening version | | | | | | |
| EM powerLED 1 W BASIC SCREW-FIX | 89899858 | 139 x 30 x 21 mm | 1 | 25 pc(s). | 1,200 pc(s). | 0.056 kg |

Technical data

| | |
|---|--|
| Rated supply voltage | 220 – 240 V |
| Mains frequency | 50 / 60 Hz |
| Forward voltage range LED module (1 x LED) ^① | 2.8 – 3.4 V |
| Forward voltage range LED module (2 x LED) ^① | 5.6 – 6.8 V |
| Max. open circuit voltage | 10 V |
| Mains current, 1 W device | 30 mA |
| Mains current, 2 W device | 40 mA |
| Power in mains operation, 1 W device | 3.5 W |
| Power in mains operation, 2 W device | 5 W |
| Starting time | 0.31 s from detection of emergency event |
| Overvoltage protection | 320 V (for 1 h) |
| Battery discharge current | See data sheet |
| Max. casing temperature t _c | 70 °C |
| Ambient temperature t _a | -25 ... +50 °C |
| Mains voltage changeover threshold | According to EN 60598-2-22 |
| Type of protection | IP20 |
| Lifetime | up to 50,000 h |
| Guarantee | 5 Year(s) |

Approval marks**Standards**

according to EN 50172, according to EN 60598-2-22, EN 61347-2-7, EN 61347-2-13, EN 62384, EN 55015, EN 61000-3-2, EN 61547, EN 60068-2-64, EN 60068-2-29, EN 60068-2-30

Specific technical data

| Type | Rated duration | Typ. λ (at 230 V, 50 Hz) | Typ. output power | Forward voltage range LED module | Mains current in charging operation | | | Mains power in charging operation | | |
|--|----------------|----------------------------------|-------------------|----------------------------------|-------------------------------------|---------------|----------------|-----------------------------------|---------------|----------------|
| | | | | | Initial charge | Fast recharge | Trickle charge | Initial charge | Fast recharge | Trickle charge |
| EM powerLED 1 W BASIC SCREW-FIX | 1 / -1 h | 0.52C | 1 W | -1 – -1 V | 15.4 mA | 17.9 mA | 13.9 mA | 1.3 W | 1.6 W | 1.1 W |
| EM powerLED 1 W BASIC SCREW-FIX | 2 / -1 h | 0.52C | 1 W | -1 – -1 V | 14.2 mA | 17.6 mA | 11.8 mA | 1.1 W | 1.6 W | 0.8 W |
| EM powerLED 1 W BASIC SCREW-FIX | 3 / -1 h | 0.52C | 1 W | -1 – -1 V | 14.2 mA | 17.6 mA | 11.8 mA | 1.1 W | 1.6 W | 0.8 W |

① Tolerance range for electrical data: $\pm 10\%$.

② EM = Emergency

③ Maintained operation