

EM powerLED PRO EZ-3 4 W

Combined emergency lighting LED driver 1 – 4 W

**Product description**

- _ Emergency lighting LED driver with DALI interface and automatic test function
- _ For self-contained emergency lighting
- _ SELV for output voltage < 60 V DC
- _ Low profile casing (21 x 30 mm cross-section)
- _ 5 years guarantee

Properties

- _ Non maintained operation
- _ DALI interface for controlled testing and monitoring
- _ Constant current mode
- _ With either screw or clip fastening (clip-fix)
- _ 1, 2 or 3 h rated duration
- _ Selectable operating time (jumper)
- _ Output power limitation
- _ Two-colour status display LED
- _ Automatic restart after LED replacement
- _ Electronic multi-level charge system
- _ SELV classified (outputs powerLED, battery, status LED, test switch)
- _ Polarity reversal protection for battery
- _ Deep discharge protection
- _ Very low energy consumption from the battery after activation of the deep discharge protection
- _ Short-circuit-proof battery connection
- _ Addressing function, patented ("EZ easy addressing")
- _ Emergency lighting LEDs available
- Tests:
 - _ Status of the battery
 - _ Status of the LED
 - _ Charge condition
 - _ Function test
 - _ Duration test

Batteries

- _ High-temperature cells
- _ NiCd or NiMH batteries
- _ 4 year design life
- _ 1 year guarantee
- _ For battery compatibility refer to data sheet

Website

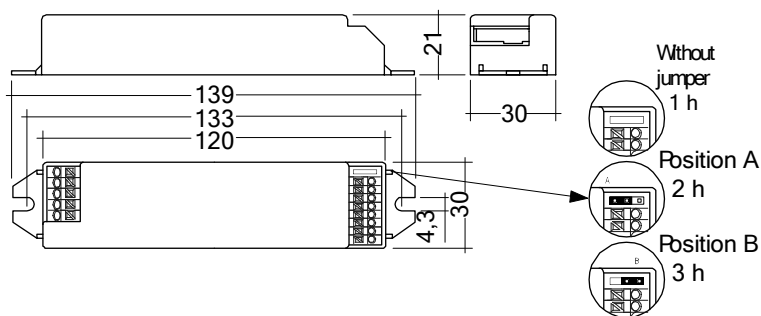
<http://www.tridonic.com/89800446>



EM powerLED PRO EZ-3 4 W

Combined emergency lighting LED driver 1 – 4 W

The complete data sheet for this product is available in the Downloads section.

**Ordering data**

Type ^①	Article number	Max. number of LEDs	Wattage	Packaging, carton	Packaging, pallet	Weight per pc.	Fixing method
EM powerLED 4 W PRO NiMH SCREW-FIX	89800446	2	4 W	25 pc(s).	1,200 pc(s).	0.068 kg	Screw fastening version

Technical data

Rated supply voltage	220 – 240 V
Mains frequency	50 / 60 Hz
Forward voltage range LED module (1 x LED)	2.8 – 3.4 V
Forward voltage range LED module (2 x LED)	5.6 – 6.8 V
Max. open circuit voltage	10 V
LED current in emergency operation (1 x LED)	1,000 mA
LED current in emergency operation (2 x LED)	700 mA
Typ. output power (1 x LED)	3.4 W
Typ. output power (2 x LED)	4.5 W
Starting time	0.23 s from detection of emergency event
Overvoltage protection	320 V (for 1 h)
Battery discharge current	See data sheet
Max. casing temperature t_c	70 °C
Ambient temperature t_a	-25 ... +45 °C
Mains voltage changeover threshold	According to EN 60598-2-22
Type of protection	IP20
Lifetime	up to 50,000 h
Guarantee	5 Year(s)
Dimensions L x W x H	139 x 30 x 21 mm

Approval marks**Standards**

according to EN 50172, according to EN 60598-2-22, EN 61347-2-7, EN 61347-2-13, EN 62384, EN 62034, EN 55015, EN 61000-3-2, EN 61000-3-3, EN 61547, EN 60068-2-29, EN 60068-2-30, EN 60068-2-64, EN 62386 (acc. to DALI standard V1)

Specific technical data

Type	Rated duration	Typ. λ (at 230 V, 50 Hz)	Forward voltage range LED module	Mains current in charging operation			Mains power in charging operation		
				Initial charge	Fast recharge	Trickle charge ^②	Initial charge	Fast recharge	Trickle charge ^②
EM powerLED 4 W PRO NiMH SCREW-FIX	1 / -1 h	0.34C	-1 – -1 V	19.0 mA	24.0 mA	13.0 mA	1.7 W	2.4 W	1.0 W
EM powerLED 4 W PRO NiMH SCREW-FIX	2 / -1 h	0.34C	-1 – -1 V	30.0 mA	32.0 mA	13.0 mA	3.1 W	3.3 W	1.1 W
EM powerLED 4 W PRO NiMH SCREW-FIX	3 / -1 h	0.34C	-1 – -1 V	30.0 mA	32.0 mA	13.0 mA	3.1 W	3.3 W	1.1 W

① EM = Emergency

② For EM powerLED 4 W NiMH: average over 20 min. (4 min. charge / 16 min. off)