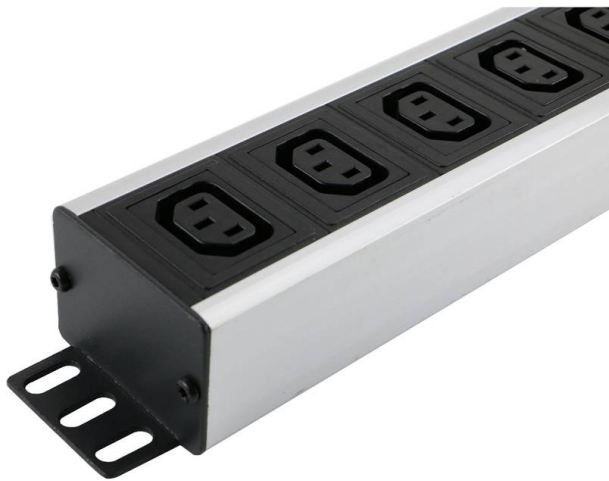


Excel 6 Way Horiz PDU 6x C13 Socket UK Plug Unswitched

Item Code: D13-6HIEC-EXL



✕ Comprehensive choice of sockets

✕ Standard 3m PVC power lead with 13 Amp BS 1363 UK plug

✕ Choice of mounting options

✕ Fully shrouded switch

✕ LED indicator to confirm power to the unit

Product Overview

The Excel range of power distribution units are designed for installation and use within 19" networking cabinets and enclosures. Each unit comprises a high quality aluminium extruded housing into which are loaded up to 12 sockets.

In this particular range each socket is UK style, manufactured in accordance with the BS1363 standard, the 3 metre input lead is terminated with a 13Amp rated 3 pin BS1363 plug top. The sockets are mounted at a 45° angle on the vertical PDUs and a 90° angle on the horizontal PDUs to aid with cable management.

The range of available units includes 19" horizontally mounted, and higher density vertical mounted options, each unit contains a fully shrouded switch to control input power, and a LED indicator to confirm power to the unit.

Product Specifications

Feature	Values
Mounting dimension	19 inch
Mounting size	465 mm
Mounting direction	Horizontal
Electrical connection	Connecting cord with plug
Type of electric plug connection	British Standard (BS1363)
Cable length	3 m
Number of C13 socket outlets	6
Number of rack units (RU)	2
Width	482.6 mm

Excel 6 Way Horiz PDU 6x C13 Socket UK Plug Unswitched

Item Code: D13-6HIEC-EXL



Height	62 mm
Depth	45 mm
Supply voltage	250 V
Surge Protected	no
Switchable	no
With LED indication	yes
With fuse	yes
With mounting bracket	yes

Additional specifications

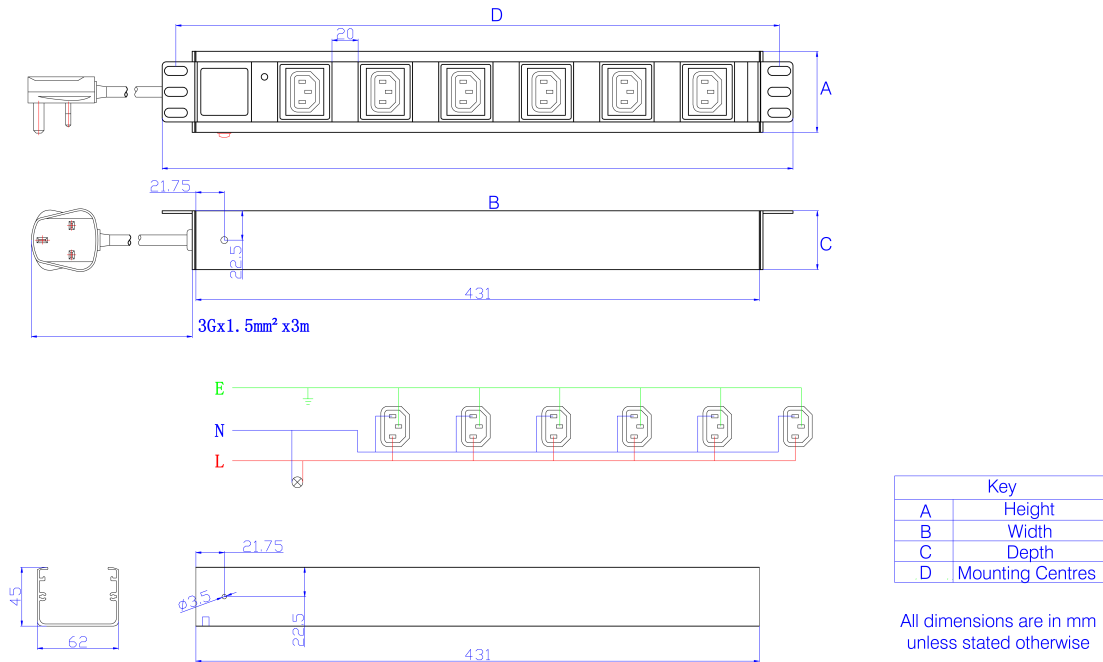
Features	Values
Input cable type	3 core 1.5mm cable
PDU Input cable connector	N/A
Rated Voltage	250 V AC 50/60 Hz
Rated current	13 A
Maximum power	3250 W
Unit control	LED indicator. On/off rocker switch
Insulation Resistance	≥5MΩ
Fire resistance	Flame retardant
Operating temperature	-10°C to +45°C
Relative humidity	0% to 90%
Cable entry (horizontal orientation)	Left
Cable entry (vertical orientation)	Top
Socket angle (horizontal orientation)	90°
Socket angle (vertical orientation)	45°
Master Circuit Breaker	NO
Master Switch	Yes
Housing colour	Silver
Housing material	Aluminum

Excel 6 Way Horiz PDU 6x C13 Socket UK Plug
Unswitched

Item Code: D13-6HIEC-EXL



Product drawing



Standards

Applicable standard	Detail
RoHS-II/-III (2011/65/EU & 2015/863): 2023	Our products, demonstrate full adherence to the regulatory stipulations of the EU Directive 2011/65/EU (RoHS-II) and its corresponding delegated directive 2015/863 (RoHS-III).
BS 1363-2:1995	13 A plugs, socket-outlets, adaptors and connection units. Specification for 13 A switched and unswitched socket-outlets
IEC 60884-1:2002 + AMD1:2006 + AMD2:2013 CSV	Plugs and socket-outlets for household and similar purposes - Part1: General requirements
WFD: 2023	Compliant to Waste Framework Directive
SCIP: 2023	Compliant - Does Not Contain Substances of Concern In articles as such or in complex objects (Products)

Excel 6 Way Horiz PDU 6x C13 Socket UK Plug Unswitched

Item Code: D13-6HIEC-EXL



Included accessories

Accessories	Quantity
M6 x 4 fixings	x4
user manual	x1
6mm earth cable	x1

Part Number Table

Part Number	Description
D13-10IEC-EXL	Excel 10 Way Vert PDU 10x C13 Socket UK Plug Unswitched
D13-12IEC-EXL	Excel 12 Way Vert PDU 12x C13 Socket UK Plug Unswitched
D13-6HIEC-EXL	Excel 6 Way Horiz PDU 6x C13 Socket UK Plug Unswitched

Excel is a world class premium performing end to end infrastructure solution designed, Manufactured, supported and delivered without compromise.

Contact us at sales@excel-networking.com



E&OE. Excel is a registered trade name of Mayflex Holdings Ltd.